



Imperial Material

Newsletter of the Imperial Owners Association of Sacramento Valley

Founded 1981

September, October 2000

Vol. 12, No. 5

Past IOASV Events

Blackhawk Museum – Jett Ranch Tour July 23rd

More than 60 members of 3 clubs participated in the July 23rd tour of the Blackhawk Museum, which included several notable Chrysler classics such as a 1931 Chrysler Imperial CG Sport Phaeton. Following the museum tour, an impressive caravan of Imperial, Chrysler, DeSoto, Dodge and Plymouth cars led by Larry Jett in his '33 Chrysler drove more than 20 miles down I-680 and through Niles Canyon to the Jett Ranch in Newark for a barbecue lunch, where Larry and Sandy displayed their collection of Chryslers, including a 300 C, 300F, 300I, and a cross-ram '61 Dodge Phoenix, among others. IOASV members included Charlene Quinn, Arlene & Mike Hackney, Bernice Hackney, Rich & Jan Hardy, John & Joy Martinelli, Don Steger & Evelyn Martin, Lud & Ad Indihar, Tom Johnson, Roger & Carol Selby and John Tennyson.

Black Diamond Tour August 20th

A beautiful drive through the countryside east of Mt. Diablo was followed by lunch at the Riverview Lodge on the Delta in Antioch. The afternoon was devoted to a rare tour of the Black Diamond Mine, which has been closed until recent months.

From the 1860's until the turn of the century, as the location of California's largest coal mining operation, nearly 4 million tons of coal were removed from the mine. From 1922 to 1949 there was renewed mining for the production of silica sand for the making of glass. IOASV members along with NorCal Imperial and CCPC attending this educational tour were Arlene & Mike Hackney, Tom Johnson, and Roger & Carol Selby among others.

Upcoming IOASV Events

Ohlone Fall Chrysler Classic October 1st

This is your last chance to sign up for one of the premier Chrysler car shows of the year at Ohlone College in Fremont on Mission Blvd. Just 1 mile east of I-680. See the attached flyer.

Madera Mopar Show October 8th

The final Chrysler-Mopar show of the season will be held in Madera off Highway 99 between Merced and Fresno. For those interested, see the attached flyer.

Fall Chrysler & Imperial Highways 49 – 89 – 20 Loop Tour October 13 – 15th

Response for this year's Fall Tour has been overwhelming with almost 60 people signed up to tour Highway 49 from Auburn to Sierra City and back to Nevada City. Highlights of the tour will include driving on parts of the old Lincoln Highway, seeing the longest covered bridge in the world, fall colors and spectacular scenery. The deadline was September 1st and the tour is **FULL**, but there is a waiting list for latecomers if existing sign-ups drop out by September 27th. Call tour leader John Tennyson for more information at (916) 481-3546 between 8 – 10 PM only.

November Meeting & Tour – possibly November 12th – TBA

There is no firm date or event for the November tour at this writing, as we have no tour leader. But reserve November 12th. Members will receive a special mailing in late October when the event is organized. Possibilities include a dinner and video presentation of the May Statewide Meet.



CARS FOR SALE

- **1950 Chrysler Imperial 4Dr.** – Solid, straight 8, all original. \$1,500. Also **1958 Imperial Convertible** – Original paint, solid, good restorable and rare. \$13,950. Ed (510) 232-0199 Alameda County. (3-0)
- **1951 Imperial 2 Dr. HT.** – Mike Bonanno (925) 458-1653. (7-0)
- **1959 Imperial Custom Southampton Coupe** – Loaded car with Silvercrest roof. Make offer. (707) 769-7916 or (707) 235-5201. (7-0)
- **1959 Imperial Crown Coupe** – Needs total restoration. (510) 223-4580 or (510) 222-5353. (7-0)
- **1960 Imperial Coupe and 1966 Imperial Convertible** – Bill. (510) 533-1585. (7-0)
- **1963 Imperial Crown 4 Dr. HT.** – White with blue interior. Runs but needs complete restoration, can be driven away. \$800. or BO. Don Steger (916) 967-4630 or (916) 929-8274. (5-0)
- **1964 Imperial Crown 4 Dr. HT.** – Straight body, runs and drives well. \$1,900. or BO. Don (916) 967-3366, Sacramento. (3-0)
- **1964 Imperial Convertible** – White with blue interior, good shape and runs excellent. (209) 673-4847. (7-0)
- **1965 Imperial Crown 4 Dr. HT.** – Sold new November 1964 Redwood City, CA. Never smoked in. Many extras. \$6,500. Earl Christy (925) 757-6956. (5-0)
- **1965 Imperial Convertible** – \$3,500. Also other Chryslers and Imperials. Paul (707) 584-0299. (7-0)
- **1965 Imperial Convertible** – Complete but needs full restoration. \$1,800. Also parting out 2 1963 Imperials. John Sturla (916) 381-0789. (7-0)
- **1966 Imperial Crown Convertible** – Show winner, white with blue interior. \$9,500. Chuck Sinnott (916) 489-7587, Sacramento. (3-0)
- **1968 Imperial 4 Dr.** – \$2,000. or BO. Jack Garrett (916) 922-0902. (5-0)

Please be sure to advise us of any cars and items sold so we can remove them and keep our list current for everyone.

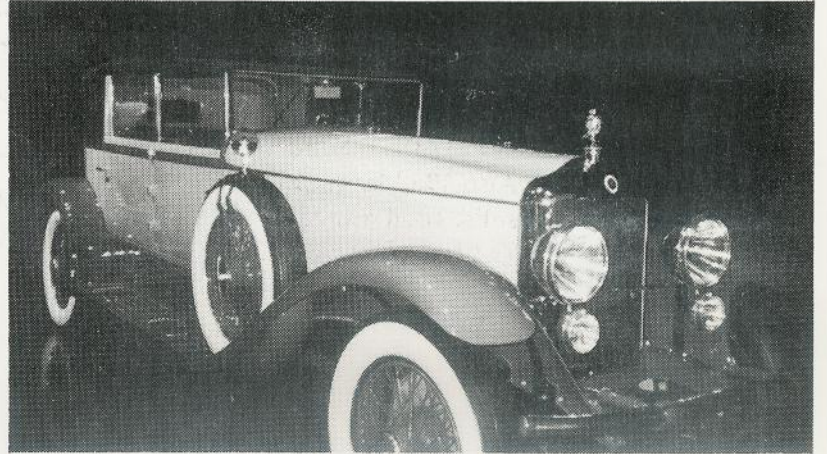
PARTS FOR SALE

- **1959, 1960 and 1963 Imperials** – Parting out. Big M Automotive. (530) 473-2225 or (530) 473-3939 Williams. (7-0)
- **1965 Imperial** – Parting out, has good engine and transmission. Also **1973 Imperial**, parting complete car with excellent interior. Ken Corwell (707) 763-2793. (7-0)
- **1965 LeBaron and 1964 – 1966** – Parts and inventory. Bud Rhines. (530) 622-1028. (7-0)
- **1964 Crown Coupe, 1965 LeBaron, 1965 Crown Sedan** including large inventory of 1964 – 1966 parts all for \$2,500. Dave Emery (530) 934-2671. (7-0)
- **1962 Imperial** – Parts for sale. Rod Merrit (530) 644-2199. (7-0)
- **Misc. Parts** – Kelsey Hayes 15” wire wheels w/ caps (4) fit ‘51 – ‘56 Imperial, good chrome, no rust \$150. each. 1 wire wheel (same as before but no cap) some corrosion \$50. 1 wire wheel (smallr 15” fits Dodge/Plymouth no cap) \$100. 56 Imperial grille valance with grilles and bottom trim piece (good chrome) \$350. 56 Imperial Deluxe Brochure (large size) very nice condition \$85. John Ryan (707) 998-9353. (7-0)
- **Emblems Restored or Reproduced** – Emblemagic Co., 8367 Shepard Road, Macedonia, OH 44056, free catalog (216) 467-8755. (3-0)
- **Car Wanted** – 1958 Imperial 2 Dr. HT, Bill (205) 426-5256. (5-0)
- **Car Wanted** – 1970 Imperial LeBaron 2 Dr. Must be mint or nice clean and good running condition. Very serious about finding this model. Call and leave message. Thomas B. Eckert (818) 315-3590. (5-0)
- **Wanted** – 1970 Imperial LeBaron bucket seats and center armrest in complete restorable condition. 1970 Hurst seats are the same. Thomas B. Eckert (818) 315-3590. (7-0)

NEWSLETTER INFORMATION

Deadline for the next I.O.A.S.V. newsletter is October 15, 2000. Mail to Jimmy White – P.O. Box 2250 – Citrus Heights, CA 95611.

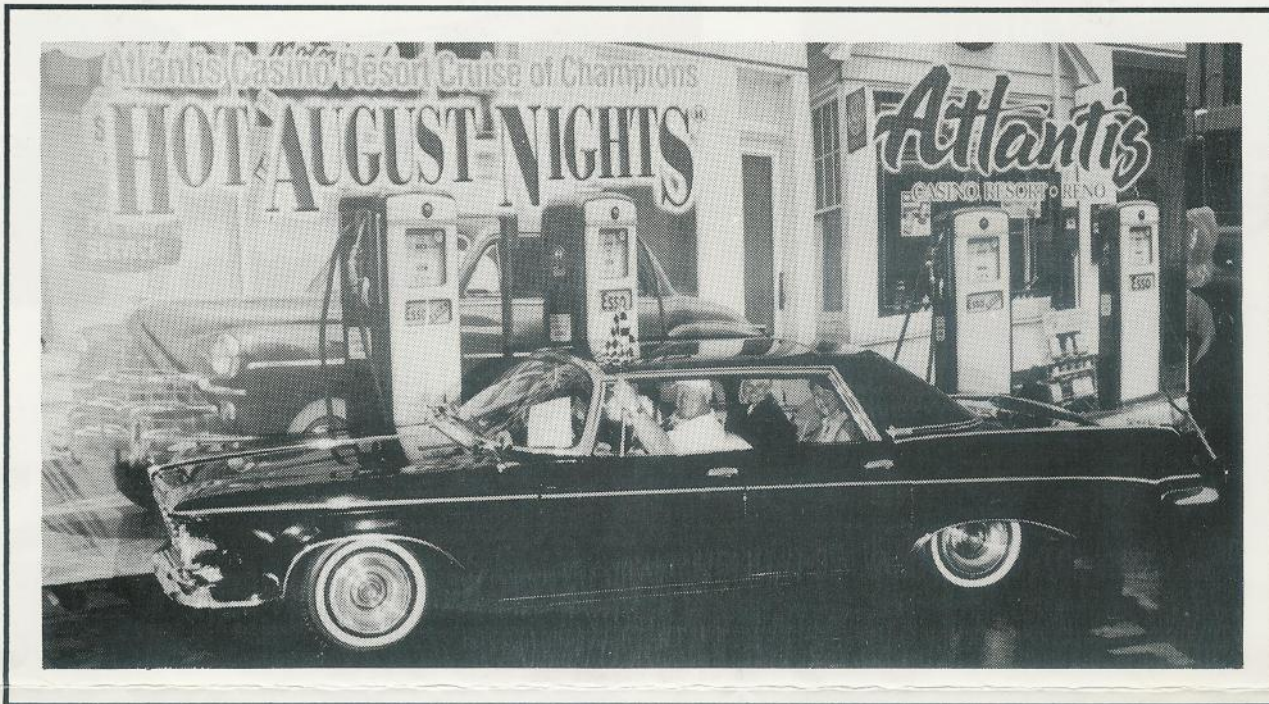
Blackhawk Museum – Niles Canyon tour – Jett Ranch B-B-Q



A SPECIAL THANKS to our wonderful host & hostess, the Jett's, and helping us all to celebrate Ad Indihar's birthday.

RENO HOT AUGUST NIGHTS

CRUISE OF CHAMPIONS IMPERIAL WINNER



Bill and Vicki Watkins spent a week in Reno in August to attend "Hot August Nights". There were 4,600 registered entrants this year with 85% being Ford's and Chevy's. Bill and Vicki entered their 1963 Black LeBaron in the \$10,000. Cruise of Champions at the Atlantis Casino. The prize money consisted of \$2,500. for Best of Show, and 10 individual classes with 1st. place receiving \$500. and runner up receiving \$250. Bill entered in the "Best Original Classic" class and was among 46 finalists on Saturday night. To Bill and Vicki's delight, the Big Black Imperial rose to the top and was chosen 1st. receiving a beautiful award with \$500. in cash attached to it. Bill and Vicki are very proud as this is the 8th. award they have won in 2000.

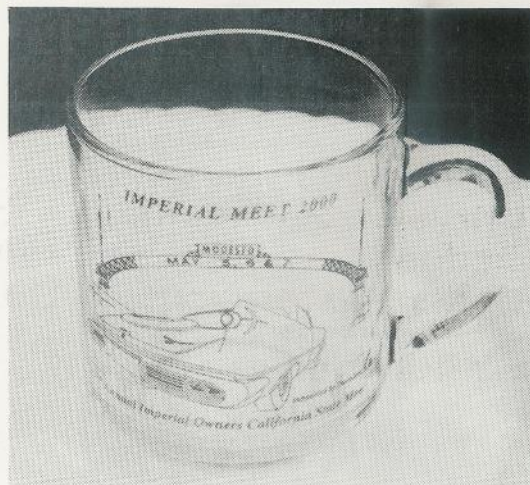
State Imperial Meet 2000 Mugs Available

IOASV members Rich and Jan Hardy made up the beautiful 1st. place plaques for our 2000 State Imperial meet. They have also made some beautiful mugs that are available for all of the rest of us to enjoy. Anyone interested in obtaining these etched (in gold) glass Coffee Mugs with the State Imperial Meet logo, the Modesto Arch and the date, etc. may contact them directly at:

(707) 678-5904

The cost is \$10.00 per mug plus \$5.00 shipping and handling.

Be sure to order yours today for better tasting coffee.



SAN JOAQUIN VALLEY Mopars, Inc.

PRESENTS THE 7TH ANNUAL

FALL FINALE 2000

SUNDAY, OCTOBER 8, 2000
TOWN & COUNTRY PARK, MADERA, CA

**DON'T MISS THE LARGEST
MOPAR CAR SHOW AND SWAP MEET
IN CENTRAL CALIFORNIA!**

There'll be:

- Food
- Raffles
- 50/50 Drawing
- Music
- Shaded Grass Parking
- Participant Judging
- Exhibits
- 23 Classes of Cars & Trucks
- 1st, 2nd, and 3rd Place Awards in All Classes
- Special Awards
- Vendor Midway
- Hotel Accommodations (Special Rates for Show Participants - Madera Valley Inn) (559) 673-5164
- Spectator and Trailer Parking
- Club Participation Award (host club excluded)
- Best of Show Award
- Long Distance Award

2000 CLASSES

- A Body
- B Body-Dodge
- B Body-Plymouth
- C Body ('65-'75)
Chrysler, Plymouth, Dodge
- Under Restoration
(no entries from last year)
- Station Wagon
- E Body-Dodge
- E Body-Plymouth
- Desoto
- 1975-1999 (Cars)
- 1955-1962
- Pre-1955
- Race Car
- Convertible
- Truck / Van Pre '72
- Truck / Van '72-2000
- Daily Driver Pre '68
- Daily Driver '68-74
- Special Interest
(Emergency, Winged, Shelby American Motors, Etc.)
- Street Rod (Mopar Bodied or Powered)
- Imperial
- 300 + 300 Letter



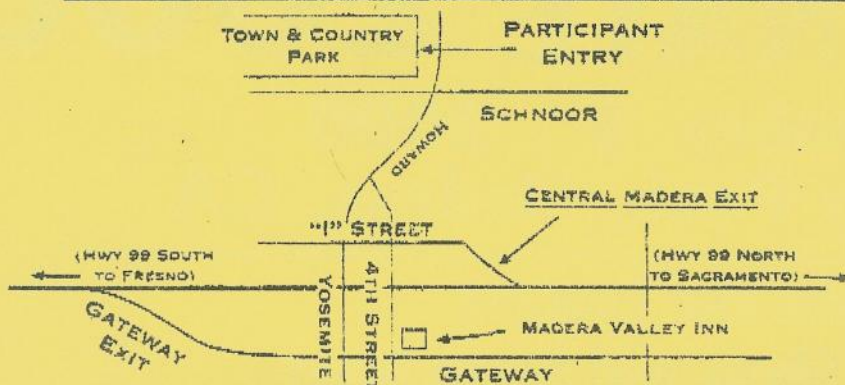
A Portion of the Event Proceeds will go to the Marjaree Mason Center

DIRECTIONS TO TOWN & COUNTRY PARK, MADERA, CA

FROM THE SOUTH-LA, BAKERSFIELD, FRESNO, ETC.: TAKE HWY 99 NORTH AND EXIT ON GATEWAY. GO APPROX. 1.4 MILES TO YOSEMITE AVE. TURN LEFT ONTO YOSEMITE. CONTINUE APPROX. 1 1/2 MILES (YOSEMITE TURNS INTO HOWARD). WATCH FOR SIGNS AND BANNERS AT PARK ENTRANCE ON THE LEFT.

FROM THE NORTH-SACRAMENTO, MODESTO AND HWY 152, ETC.: TAKE HWY 99 SOUTH INTO MADERA (PAST THE FAIRGROUNDS) AND EXIT ON CENTRAL MADERA OFFRAMP. TURN LEFT ON "I" ST. AND TRAVEL SOUTH TO YOSEMITE. TURN RIGHT ON YOSEMITE AND TRAVEL 1.5 MILES TO TOWN & COUNTRY PARK.

WATCH FOR THE MOPAR BANNERS!



- ☞ GATES OPEN AT 7:30 AM
- ☞ CAR TO BE IN PLACE BY 10 AM
- ☞ RETURN VOTING BALLOTS BY 1 PM
- ☞ DASH PLAQUES WILL BE TRADED FOR YOUR COMPLETED BALLOT
- ☞ AWARDS AT 2:30 PM

FOR ADDITIONAL INFORMATION ON THE SHOW, SWAP MEET OR CRAFT FAIR CALL:

JOHNETTA REED (559) 227-4467
E-MAIL: CUDAMO@AOL.COM

FEES:

- \$15.00 (PRF-REGISTRATION) PER SHOW CAR - REGISTERED BEFORE OCT 1ST
- \$20.00 (DAY OF SHOW) PER SHOW CAR-OCCUPANTS AND SPECTATORS FREE
- \$25.00 PER SWAP MEET SPACE OR CRAFT SPACE

ALL PRE-REGISTERED ENTRANTS WILL RECEIVE A TICKET FOR A SPECIAL DRAWING

   **PLEASE FILL OUT PRIOR TO ARRIVAL**   

PLEASE CHECK ONE: SHOW SWAP VENDOR

NAME _____ CLUB (IF ANY) _____

ADDRESS _____

CITY _____ STATE _____ ZIP _____

PHONE OR FAX# _____

CAR INFORMATION:

YEAR _____ MAKE _____ MODEL _____

COLOR _____ CLASS ENTERED _____

SEND TO:
SAN JOAQUIN VALLEY MOPARS
OF CALIFORNIA, INC.
P. O. BOX 11931
FRESNO, CA 93775-1931

SJV Mopars, Inc. and the City of Madera will assume **NO** liability for any car, entrant, pets, guest, or spectator. All entrants are required to have their own auto insurance coverage. No Alcoholic beverages permitted on park grounds. Show & Events rain or shine.

Participant's Signature (required) _____



The Executive accommodates a separate radio telephone for voice transmission. The front passenger seat swivels 180 degrees to the rear to allow comfortable meetings over the steady desk. Center armrest contains most of the gear.

EXECUTIVE SUITE

Chrysler experiments with an office on wheels in luxury

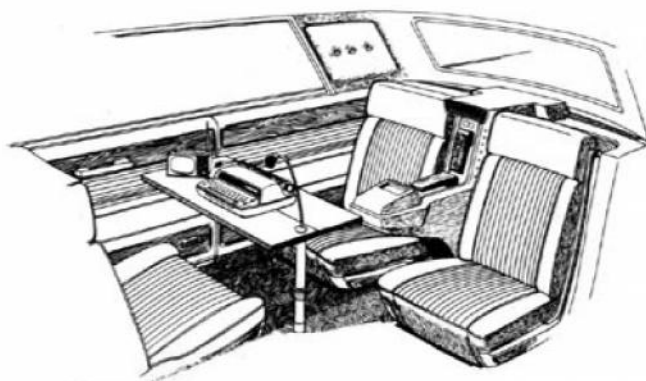
Imperial has created an experimental luxury car fitted inside for use as an executive office with new concepts in mobile communications. It is designed to permit an executive to send and receive reports and illustrations as well as to make telephone calls and conduct other business while the car is in motion.

Called the Imperial Mobile Executive car, it is being displayed at automobile shows throughout the country.

The car has a front passenger's seat which swivels 180 degrees to face the rear for in-car conferences. For typing or paperwork it has a folding table and a typewriter. Provision also is made in the car for a dictating-recording machine and a small television set visible only to the rear seat passengers.

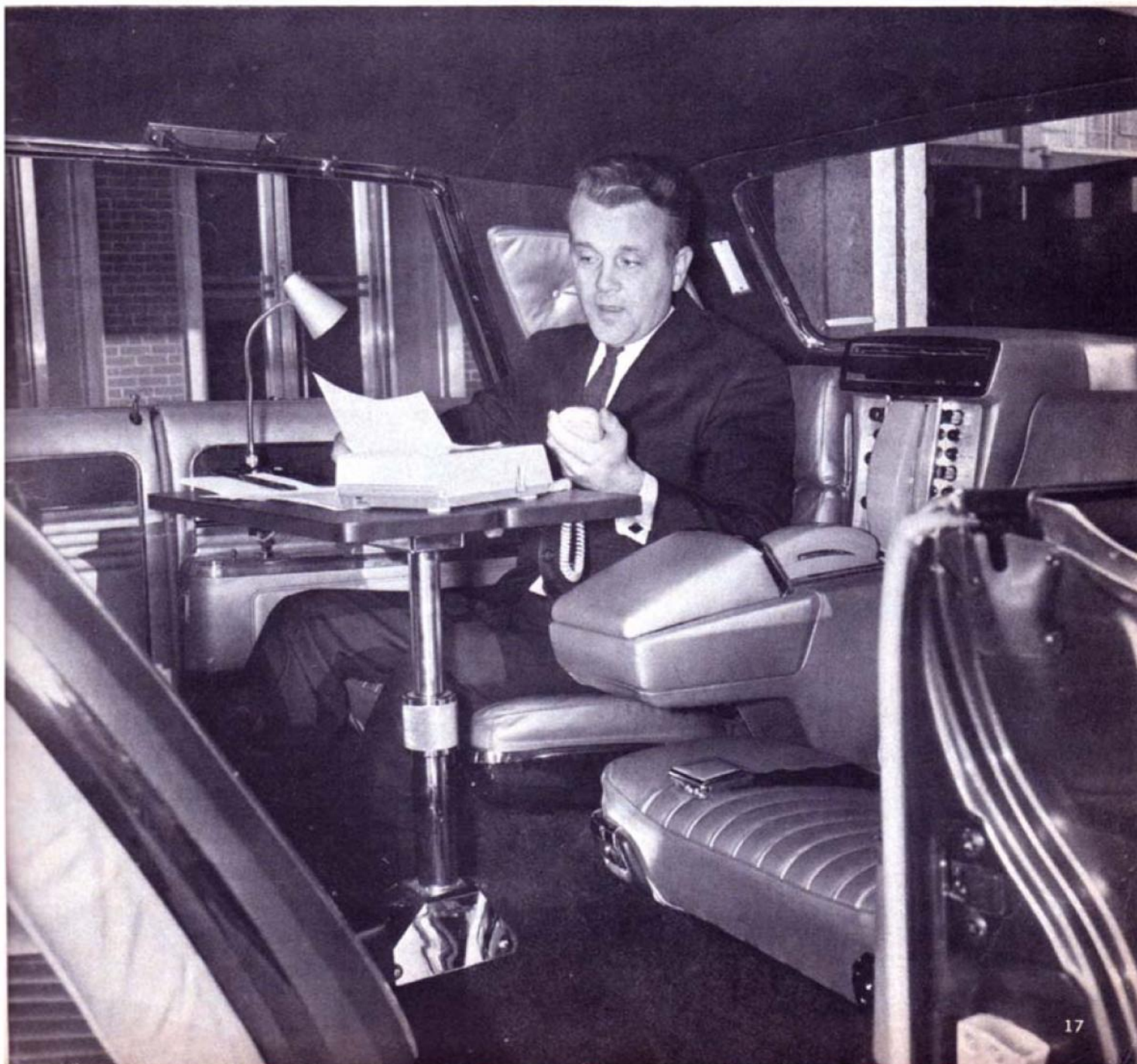
When not in use as a mobile office, the Mobile Executive car becomes a four-passenger automobile with reclining seats in the rear and with a rear center console for storing communications equipment. The front passenger seat also reclines. The space between the two front seats is used for storing the folding table and the television set.

The exterior design is the same as for the 1966 Imperial Crown coupe.



From the outside, the Chrysler Executive appears to be an innocent 1966 Imperial Crown Coupe. It is painted in a special charcoal metallic with trim of silver gray.

If owner wishes to transmit a report or picture to several locations simultaneously, Datafax transmitter can do the job in six minutes. Unit will also receive copy. Equipment is made by Stewart-Warner and marketed by the Dictaphone Corporation.



California Chrysler Products Club

Presents it's 10th Annual

Chrysler Bay Area Fall Classic Car Show & Swap Meet

Sunday, October 1, 2000

Ohlone College

43600 Mission Blvd.

Lots E, D & H

Fremont, Ca.

7:00 AM - 3:00 PM.

No Alcohol or pets please

- ◆ Post-War Cars
- ◆ Muscle Cars
- ◆ Trucks
- ◆ Chrysler 300
- ◆ 1956-61 Fury
- ◆ Pre-War Cars

Let's Talk Chryslers

Shine and Show your Chrysler product for all to see.

Pre-Wars will be the Marque Center Attraction.

1956 to 1961 Golden Fury Class.

Over 200 Cars Expected.

Custom Awards sponsored by Daimler-Chrysler Corp.

Only all Chrysler products show of it's kind.

Free for Spectators

Pre-War Vehicles admitted free

Entry Fee: \$15 before September 28, 2000

\$20 after

Entries accepted on day of show

Schedule

7:00	Gates Open
9:00	Show Begins
12:00	Voting Closes
2:00	Awards & Parade
3:00	Show Closes

Food Service 7:AM to 2:00PM

For Information Contact

Nelson Moore 408-245-7199

Lud Indihar 408-262-0377

Joe Narduzzi 925-373-0626

Daimler Chrysler Sponsored Awards

California Chrysler Products Club

P.O. Box 2660

Castro Valley, Ca. 94546

The California Chrysler Products Club is a non-profit organization and is not affiliated with Daimler-Chrysler Corp. Mopar, the Pentastar and the name Daimler-Chrysler are registered trademarks of Daimler-Chrysler Corp

Pre-Registration

Your Invitation

California Chrysler Products Club 10th. Annual Fall Classic

Last Name First Name

Street Address

City State Zip

Phone Number

Year Make

Model Body Style

- (Free)Pre-War Post-War Truck
 Muscle Car Chrysler 300 56/61 Fury

(Received by Sept 28, 2000)

Entry FEE \$15.00 \$ _____

Additional Vehicle \$10 \$ _____

(Received after Sept 28, 2000)

ENTRY FEE \$20.00 \$ _____

Additional Vehicle \$15 \$ _____

VEHICLES For Sale \$25.00 \$ _____

SWAP SPACE \$25.00 = \$ _____

VENDOR \$25.00 = \$ _____

TOTAL ENCLOSED = \$ _____

Checks payable to:
CA. CHRYSLER PRODUCTS CLUB INC
 Mail to: Car Show
 Lud Indihar
 850 Evans Road
 Milpitas Ca. 95035

RELEASE OF LIABILITY

In consideration of participation by the undersigned in the 10th Annual Chrysler Bay Area Fall Classic at Ohlone College on October 1, 2000, the participant agrees to hold harmless and indemnifying the Ohlone College, Chrysler Products Club, its Members, and Officers against all claims and demands arising directly or indirectly from this event. I have read the rules and conditions:

Signature of Owner/Exhibitor _____ Date _____

C.M.

To the 10th Annual Chrysler Bay Area

Fall Classic

Car Show and Swap Meet

October 1, 2000

Ohlone College

43600 Mission Blvd.

Fremont, California

Parking Lots E, D and H

Lodging

Motel 6 46101 Research Ave

Fremont Ca.510-490-4528

Quality Inn 47031 Kato Road

Fremont Ca.510-490-2900

Rules

- 1) Chrysler product cars and trucks are considered to be Plymouth, Dodge, Chrysler, DeSoto and Imperial.
- 2) Entry fee and signed release of liability must accompany each entry form.
- 3) In the event of rain, the show will go on. No Refunds
- 4) Dash plaque will be given to the first 225 entries.
- 5) All cars must be in place by 10:00 am and remain in place until 3:00 PM, unless participating in winner's parade.
- 6) Car security is the responsibility of each car owner.
- 7) FREE admission and parking for spectators.
- 8) Entries will be accepted until 10:00 am on day of show.
- 9) 1st, 2nd & 3rd place will be awarded for each Post-war make, Truck, Muscle Car, Fury and Chrysler 300. One award for each Pre-war Marque. "Best of Show" and a "President's Trophy" will also be awarded. "Best of Show" will be selected from 1st place winners by CCPC Executive Committee. President of CCPC will select President's Trophy winner. **NO DOUBLE AWARDS!**
- 10) All cars and trucks will be judged by all show participants.
- 11) Muscle Car class is limited to model years 1962-1972.
- 12) Pre-war trucks will be grouped with post-war.
- 13) Each vehicle may only be entered in one class. A registration fee must be paid for each vehicle entered.
- 14) For confirmation send SASE with entry.
- 15) Vehicles for sale will be displayed with other show participants and will be eligible for awards. Must display For Sale sign provided by CCPC.
- 16) NO alcoholic beverages are allowed on the campus.
- 17) Clean up before leaving. Leave no Oil or trash
- 18) Fire Extinguisher recommended for each car.
- 19) Absolutely no burnout's or racing. Violators will be banned from future meets.

Cut here

Special Thanks to Daimler Chrysler

California Chrysler Products Club

P.O. Box 2660

Castro Valley Ca.94546



OFFICIAL
IMPERIAL
OWNERS
CAPS

foam caps w/ "Imperial Owners" logo
in
TAN, LT. BLUE, ROYAL BLUE, MAROON, WHITE w/ contrasting logo

\$6 each at show
(proceeds support Imperial Meet 2000)

MAIL ORDER FORM

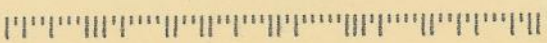
Name _____ **Phone** _____

Address _____
street city zip

\$6 each plus \$3 ship & handling = \$9 each / indicate choice of color (above) _____

Send Check payable to "Imperial Owners"
% John Martinelli
6611 Graham Circle
Citrus Heights, CA 95610

allow 3 weeks for delivery



95620-2736

Dated Material

Rich & Jan Hardy
720 Sierra Drive
Dixon, CA 95620



IMPERIAL OWNERS ASSOCIATION
OF SACRAMENTO VALLEY
P.O. BOX 254973
SACRAMENTO, CA 95865



Upcoming Events

Information inside for the next several *IOASV* events. Be sure to check out the details and get your registration forms in ASAP.

